



“ I don't need aprons next week.  
I need them shipped TODAY.”



“ I don't need plain chef coats.  
I need our logo EMBROIDERED.”



“ I don't need stock cook shirts.  
I need really BIG sizes.”

**LIP SERVICE  
ENDS HERE**

**PINNACLE**  
TEXTILE

CATALOG OF SERVICE APPAREL, APRONS, LINENS & MORE • PHILADELPHIA / LAS VEGAS



LIP SERVICE  
ENDS HERE

**PINNACLE**  
TEXTILE

*SERVICE APPAREL, APRONS, LINENS & MORE • PHILADELPHIA / LAS VEGAS*



## OUR ROOTS.

Pinnacle Textile Industries, LLC was founded by three industry veterans with over 100 years of combined experience between them. Robert Lazarus, Chairman, Patrick Methven, President and Managing Partner, and David Gurss, VP of Sales, were all instrumental in building family-owned Penn State Textile Mfg., Inc. into a nationally-renowned, industry innovator. They've drawn on their deep roots in the business and grown Pinnacle Textile into a service-centric company 100% focused on meeting the demands of demanding clients, with a broad range of product lines. From KITCHEN BASIX, our standard, high-volume brand of chef coats, shirts and pants for culinary institutes and home laundering programs to our heavy-duty PINNACLE HD brand, a line of 100% polyester garments that best withstand the rigors of industrial laundering... to CHEF TRENDS, our top-of-the-line brand constructed of 100% cotton, 65/35 or 80/20 blends, and rivaling the highest quality apparel available. At a fraction of the cost.

Pinnacle meets "impossible" deadlines with 100% SAME-DAY SHIPPING on orders received before 4 PM EST. We always maintain deep inventories across the board, insist on unerring fabric consistencies and maintain exacting quality controls.

Our manufacturing capabilities are global, utilizing first-rate fabrics and meticulous sewing standards to withstand the rigors of the industrial wash cycle. And that's why Pinnacle is able to offer a 60-DAY, NO-HASSLE RETURN POLICY.



**PATRICK METHVEN**  
President & Managing Partner

## OUR CLIENTS.

Pinnacle Textile serves Linen and Textile Rental Operators, Distributors, Public and Private Equity Restaurant companies, Retail Uniform Outfitters, Party Rentals and large buyers of Image Uniform Programs. From service apparel and aprons to linens and specialty items. If you use it we supply it. Including a variety of cover garments such as Butcher Frocks, Smocks and Wrap Gowns for use in meat and poultry plants, supermarkets and butcher shops. And our "Build Your Own" frock program allows you to customize these cover garments to meet varying local, state or federal requirements.

If you are an end use customer, or individual restaurant, and need help selecting a distributor or local linen service, email our Customer Service Center at [custsvc@pinnacletextile.com](mailto:custsvc@pinnacletextile.com). For all other new customer inquiries, call David Gurs, VP of Sales directly at 248-789-8505 or email him at [davidg@pinnacletextile.com](mailto:davidg@pinnacletextile.com).

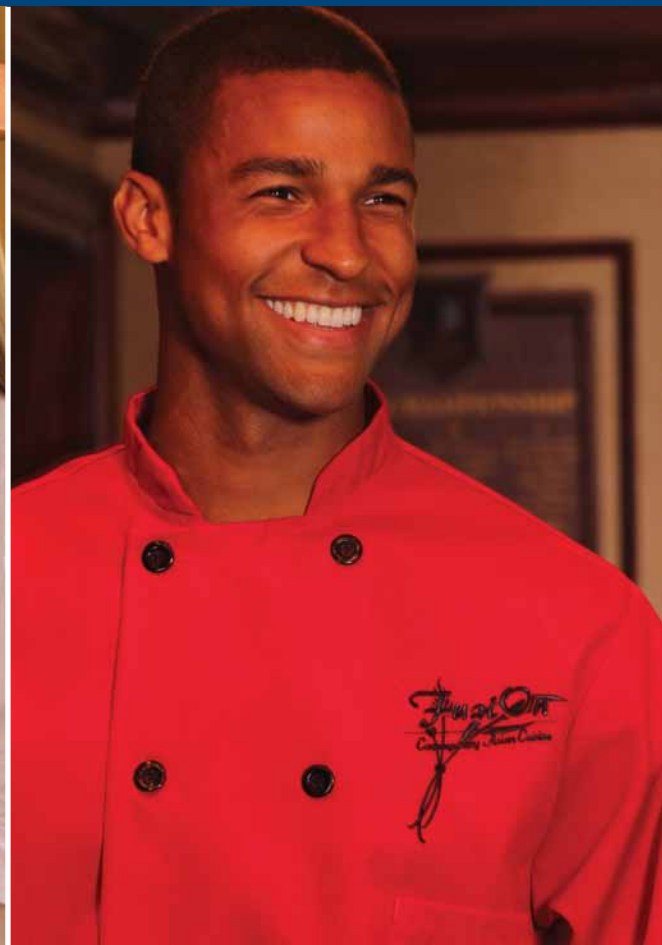
We look forward to showing you what doing business with Pinnacle is all about.

## OUR PROMISE.

Yes, we deliver remarkable quality, selection and value in every category. But in the end, Pinnacle Textile is all about focusing on your needs and responding with real SERVICE.

From SAME-DAY SHIPPING to PRIVATE LABEL capabilities and GARMENT MODIFICATIONS. From on-site CUSTOM EMBROIDERY, RARE SIZES TO 7X and SPECIAL FABRICS AND COLORS. Or we'll create an original CUSTOM DESIGN for you. Just ask. It's all part of Summit Services. Because Pinnacle does whatever it takes.

And that's a promise we never break.

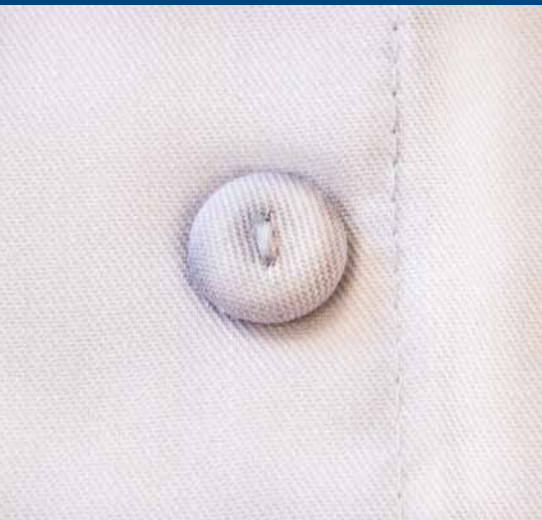




## TABLE OF CONTENTS

|                                       |        |
|---------------------------------------|--------|
| Chef Coats .....                      | Pg. 7  |
| Cook Shirts .....                     | Pg. 22 |
| Unisex Baggy Chef Pants .....         | Pg. 25 |
| Traditional Chef/Cook Pants .....     | Pg. 28 |
| Chef Hats/Kerchiefs/Skull Caps .....  | Pg. 30 |
| Butcher Frocks/Lab Coats/Smocks ..... | Pg. 34 |
| Aprons .....                          | Pg. 41 |
| Table Linens .....                    | Pg. 51 |
| Bar Mops .....                        | Pg. 53 |
| Summit Services .....                 | Pg. 57 |
| Replacement Components .....          | Pg. 59 |
| On-Site Embroidery .....              | Pg. 60 |
| Pinnacle Image .....                  | Pg. 63 |
| Polo Shirts .....                     | Pg. 64 |

If you don't see an item, call us at 1-800-901-4784 and we'll find it for you.



“ I don't need stock cook shirts.  
I need really BIG sizes. ”



[PinnacleTextile.com](http://PinnacleTextile.com)

Pinnacle service only begins with stocking rare sizes to 7X. There's so much more. We don't just talk about responding to your needs. Pinnacle listens. And responds with action not words. We do whatever it takes.

- Deep Inventories
- Private Label
- Garment Modifications
- Custom Embroidery
- Special Packaging
- 60-Day Return Policy
- Same-Day Shipping
- Special Fabrics/Colors
- Image Programs
- Rare Sizes to 7X
- Custom Design Service
- Thermopatch Marking

LIP SERVICE  
ENDS HERE

**PINNACLE**  
TEXTILE

SERVICE APPAREL, APRONS, LINENS & MORE • PHILADELPHIA / LAS VEGAS  
CUSTSVC@PINNACLETEXTILE.COM • 440 DREW COURT • KING OF PRUSSIA, PA 19406 • TOLL FREE: 800.901.4784



## SERVICE APPAREL

### Kitchen Basix by PINNACLE

Our standard entry level line of high-volume garments specifically designed for culinary institutes and home laundering programs. Available from stock in a myriad of different configurations. The Kitchen Basix garment line is made mainly from 6.5 to 7 ounce 65/35 Poly/Cotton Classic Twills and lighter-weight blended poplins.

### PINNACLE HD

Our heavy-duty line of 100% polyester garments that best stand up to the abuse of harsh industrial laundering. Durable and breathable, they soften with age and release even the toughest stains. Perfect for industrial and linen rental operators who seek the maximum product life and universal customer acceptance. Will last over 100 industrial launderings and deliver the best ROI.

### chef trends by PINNACLE

Our top-of-the-line brand constructed with a choice of the finest materials to withstand the rigors of both home and industrial laundering. Rivals the highest quality apparel in the business. At a fraction of the cost. Fabrics include 7 ounce or heavier 65/35 Enhanced Poly/Cotton Ring-Spun Twill, 100% Combed Cotton, 65/35 Poly/Cotton Ring-Spun Twill with a mechanical stretch and 65/35 Poly/Cotton Poplins. Our Chef Trends brand offers you the greatest variety of fabrics, colors, styles and trims.

“ While our customers continue to become more demanding, Pinnacle continues to come through for our company so we can meet those customer demands. ”

LIP SERVICE  
ENDS HERE

John Dwyer  
General Linen & Uniform







All coats listed have 1 chest pocket and 1 thermometer pocket on left sleeve. Buttons are 10 two hole pearl buttons. Coats are carton packed 36 each per carton, 6 each per polybag.

Kitchen Basix  
BY PINNACLE

## CHEF COATS



Pearl Button



Thermometer Pocket



PLASTIC BUTTON,  
FULL SLEEVE LENGTH

### PRODUCT DETAILS:

**FABRIC:** 65/35 Poly/Cotton  
(6.5-7 oz) Twill

**COLOR:** White

**LENGTH:** Regular

**SIZE:** XS-5X

STYLE:  
**C110**

# CHEF COATS



All coats listed have 1 chest pocket and 1 thermometer pocket on left sleeve. Buttons are 10 100% polyester hand-tied cloth knot buttons, double bar-tacked externally. All coats listed are packed 36 each per carton, 6 each per polybag.

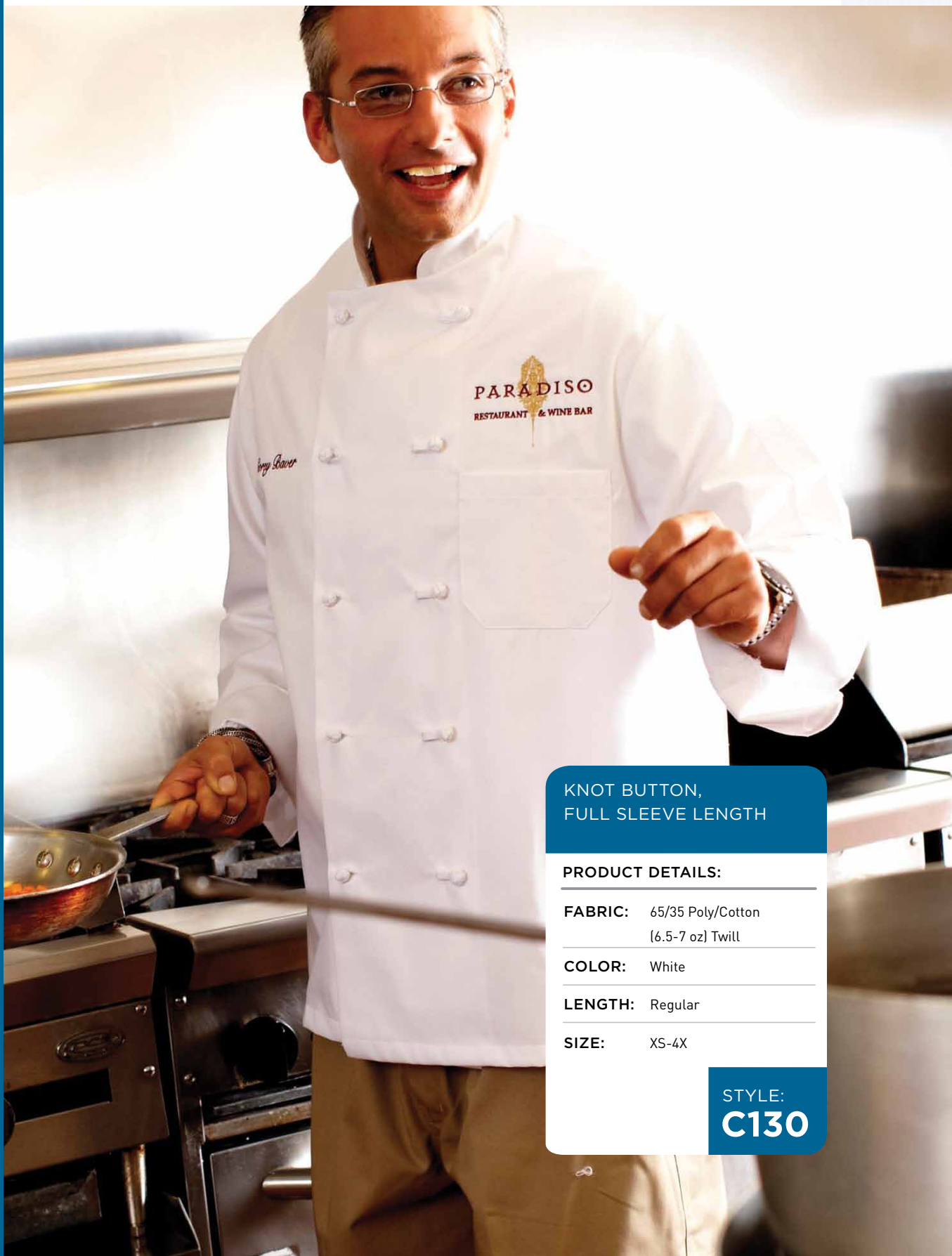
kitchen basix  
by PINNACLE



Knot Button



Thermometer Pocket



**KNOT BUTTON,  
FULL SLEEVE LENGTH**

**PRODUCT DETAILS:**

**FABRIC:** 65/35 Poly/Cotton  
(6.5-7 oz) Twill

**COLOR:** White

**LENGTH:** Regular

**SIZE:** XS-4X

**STYLE:**  
**C130**



All coats listed have 1 chest pocket and 1 thermometer pocket on left sleeve. Buttons are non-yellowing pearl buttons on White coats. Black coats have matching plastic buttons while Red coats have contrasting Black plastic buttons. White coats carton-packed 36 each carton, 6 each per polybag. Colored coats are packed 24 each per carton and individually polybagged.

## CHEF COATS

PINNACLE<sup>HD</sup>



| PLASTIC BUTTON, FULL SLEEVE LENGTH |       |        | STYLE:<br><b>C310</b> |
|------------------------------------|-------|--------|-----------------------|
| FABRIC                             | COLOR | LENGTH | SIZES                 |
| 100% (7.2 oz) MJS Spun Polyester   | White | Reg    | XS-7X                 |
|                                    | Black | Reg    | XS-7X                 |
|                                    | Red   | Reg    | XS-5X                 |



Pearl Button



Black Plastic Button



Thermometer Pocket

# CHEF COATS



All coats listed have 1 chest pocket and 1 thermometer pocket on left sleeve. Buttons are 10 non-yellowing pearl on White Coats, and 10 Black plastic buttons on black. All coats listed are packed 36 each per carton, 6 each per polybag.

PINNACLEHD



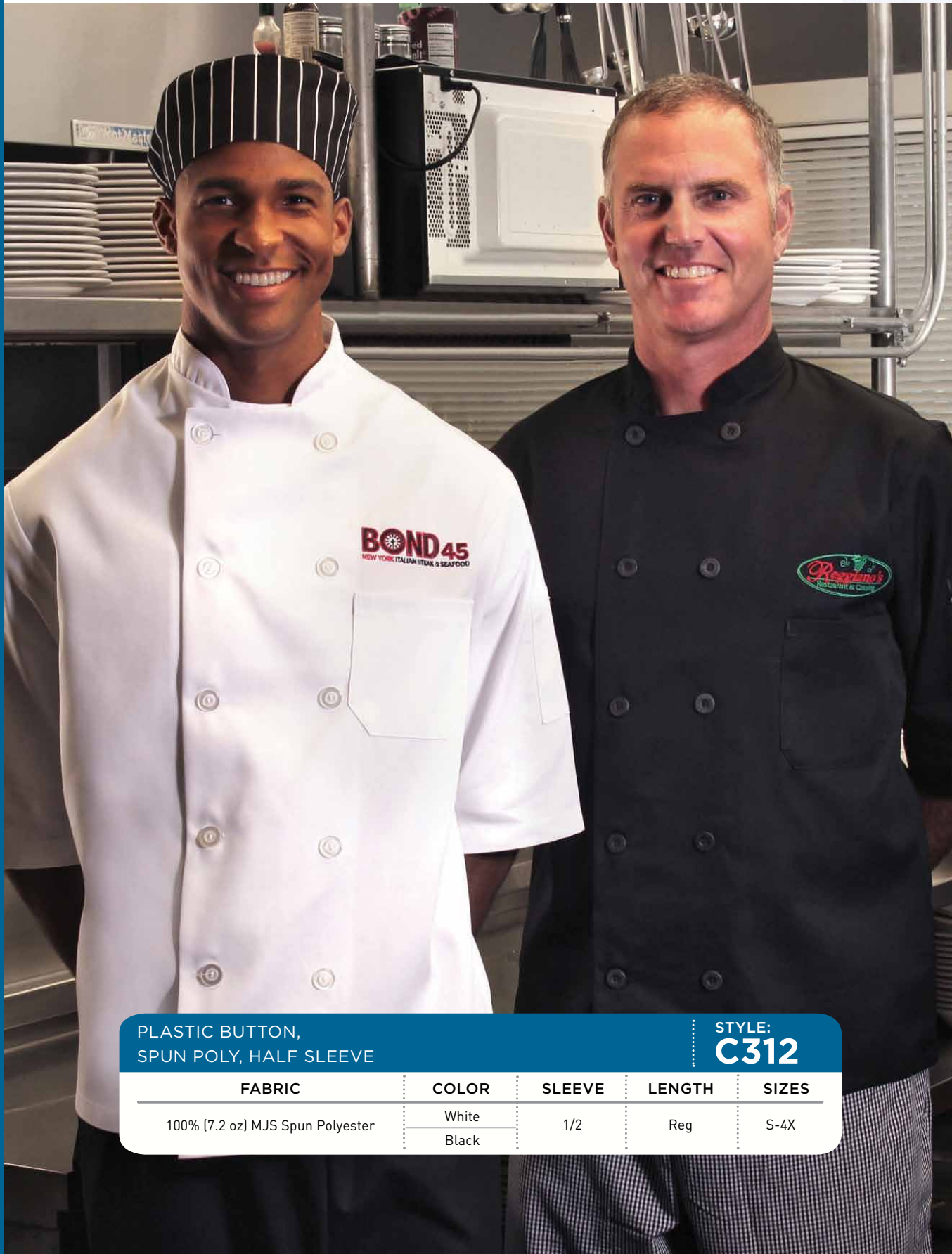
Pearl Button



Plastic Button



Thermometer Pocket



PLASTIC BUTTON,  
SPUN POLY, HALF SLEEVE

STYLE:  
**C312**

| FABRIC                           | COLOR | SLEEVE | LENGTH | SIZES |
|----------------------------------|-------|--------|--------|-------|
| 100% (7.2 oz) MJS Spun Polyester | White | 1/2    | Reg    | S-4X  |
|                                  | Black |        |        |       |



All coats listed have 1 chest pocket and 1 thermometer pocket on left sleeve. 10 black plastic buttons, black polyester trim on collar, inside cuffs and patch pockets. All coats listed are packed 24 each per carton and individually polybagged.

Available in both 65/35 (Chef Trends) and 100% Poly (Pinnacle HD)

**PINNACLE<sup>HD</sup>** chef trends  
BY PINNACLE

## CHEF COATS



Contrasting Trim



Plastic Button



Nylon Button



Contrasting Cuff



Thermometer Pocket

BLACK TRIM COLLAR, CUFFS,  
POCKETS: FULL SLEEVE LENGTH

STYLE:  
**C325**

STYLE:  
**C825**

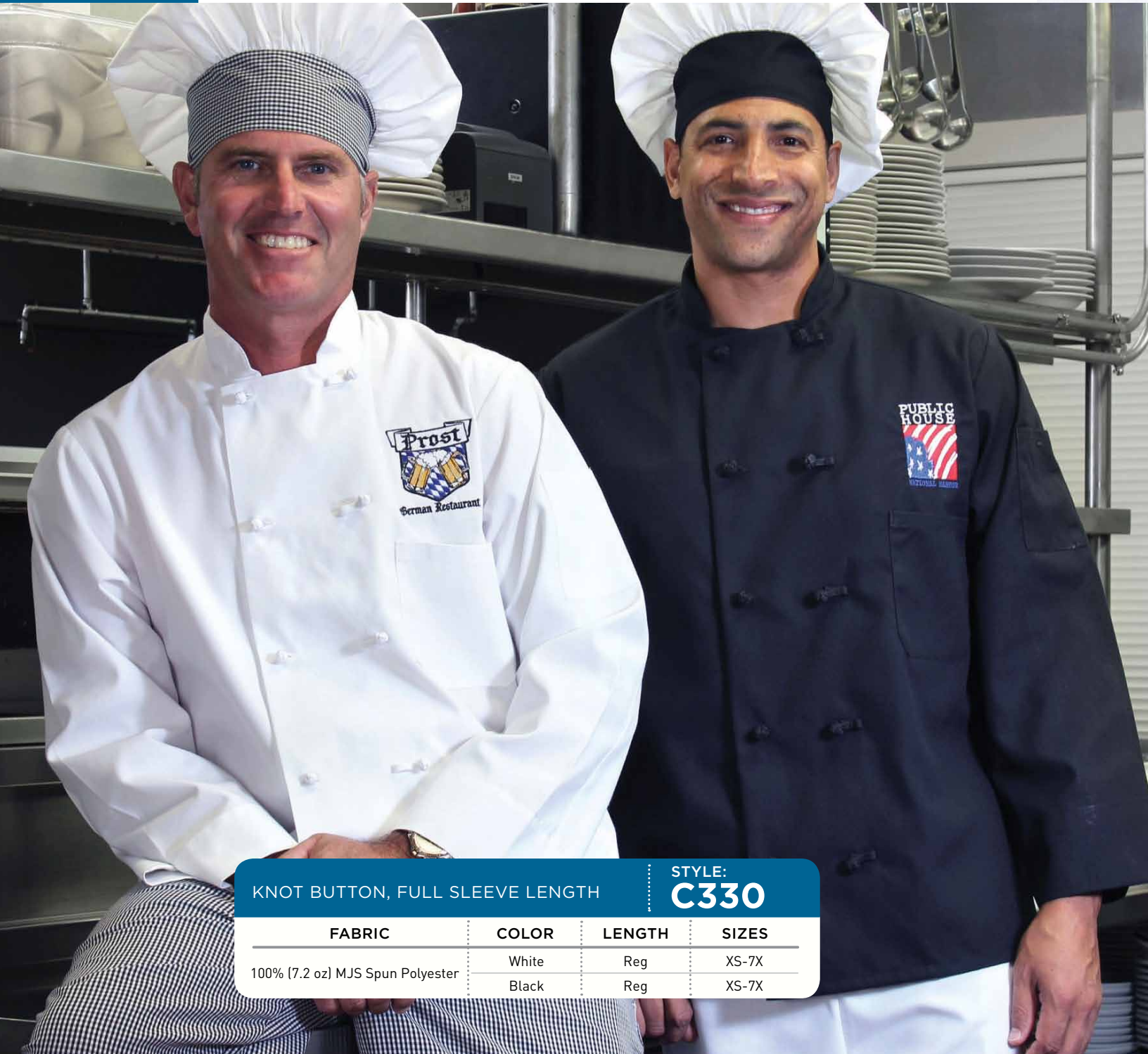
| STYLE | FABRIC                                   | COLOR            | LENGTH | SIZES |
|-------|--|------------------|--------|-------|
| C825  | 65/35 (7 oz) Poly/Cotton Ring Spun Twill | White/Black Trim | Reg    | S-6X  |
| C325  | 100% MJS (7.2 oz) Spun Polyester         | White/Black Trim | Reg    | S-3X  |

# CHEF COATS



All coats listed have 1 chest pocket and 1 thermometer pocket on left sleeve. 10 Buttons are 100% Polyester hand-tied knot buttons double bar-tacked externally. Black coats have matching color knot buttons. All coats listed are packed 36 each per carton, 6 each per polybag.

**PINNACLE**HD



KNOT BUTTON, FULL SLEEVE LENGTH

STYLE:  
**C330**

| FABRIC                           | COLOR | LENGTH | SIZES |
|----------------------------------|-------|--------|-------|
| 100% (7.2 oz) MJS Spun Polyester | White | Reg    | XS-7X |
|                                  | Black | Reg    | XS-7X |



Black Knot Button



White Knot Button



Thermometer Pocket



Coat listed has 1 welt chest pocket pocket and 1 thermometer pocket on left sleeve. Polyester piping around collar, facing, cuffs, and welt pockets. Buttons are 12 polyester hand tied knot buttons with concealed bar-tacked tails. All coats listed are packed 24 each per carton and individually polybagged.

PINNACLE<sup>HD</sup>

## CHEF COATS



Knot Button



Polyester Piping



Thermometer Pocket



Welt Pocket

MASTER,  
SPUN POLYESTER,  
CONTRASTING PIPING

### PRODUCT DETAILS:

**FABRIC:** 100% MJS  
(7.2 oz) Polyester

**COLOR:** White/ Black Piping

**LENGTH:** Regular

**SLEEVE:** Full

**SIZE:** XS-4X

STYLE:  
**C355**

# CHEF COATS



All coats listed have 1 chest pocket and 1 thermometer pocket on left sleeve. 10 cotton hand-tied knot buttons. All coats listed are packed 24 each per carton and individually polybagged.

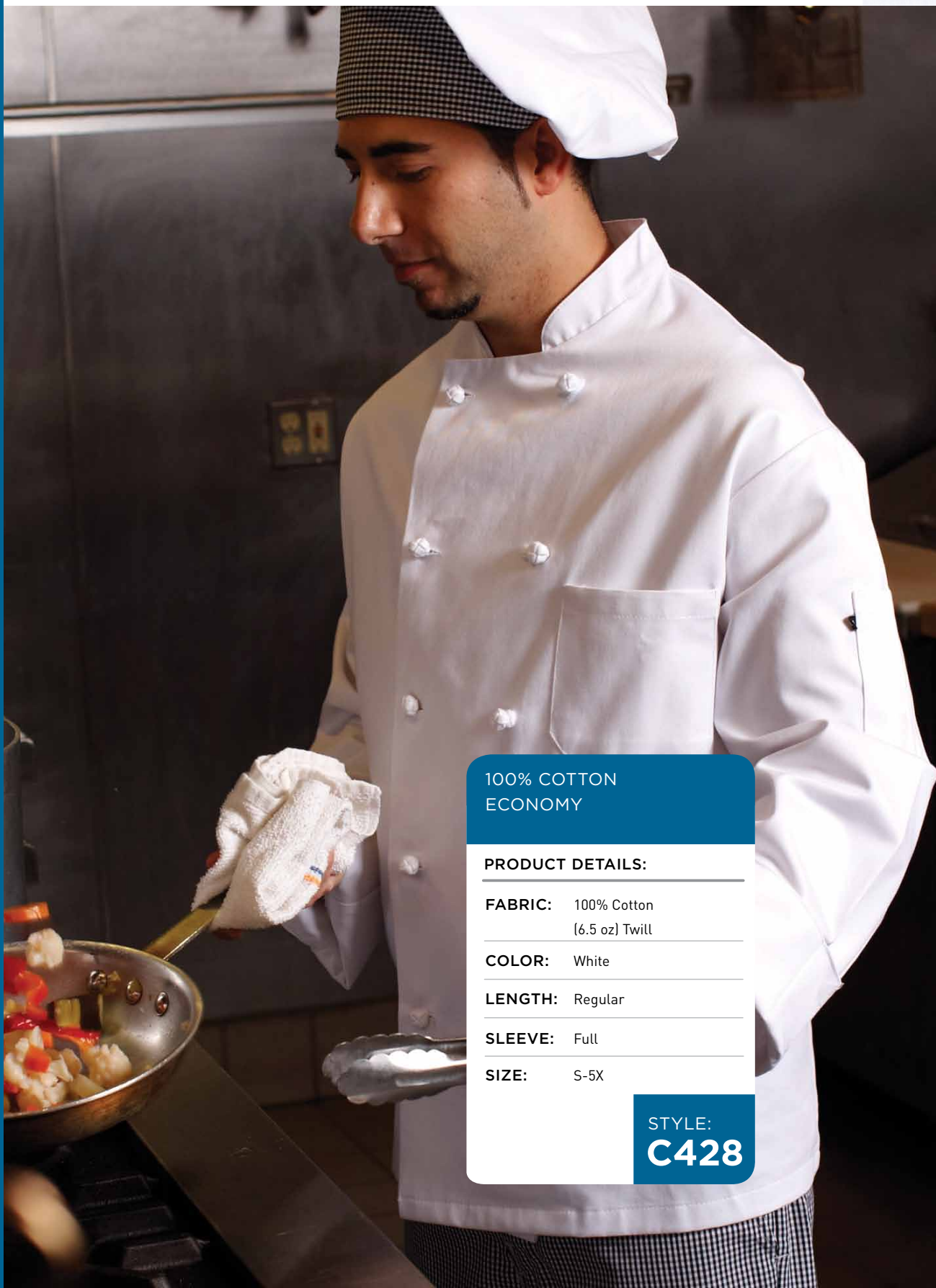
chef trends  
BY PINNACLE



Knot Button



Thermometer Pocket



100% COTTON  
ECONOMY

**PRODUCT DETAILS:**

**FABRIC:** 100% Cotton  
(6.5 oz) Twill

**COLOR:** White

**LENGTH:** Regular

**SLEEVE:** Full

**SIZE:** S-5X

STYLE:  
**C428**

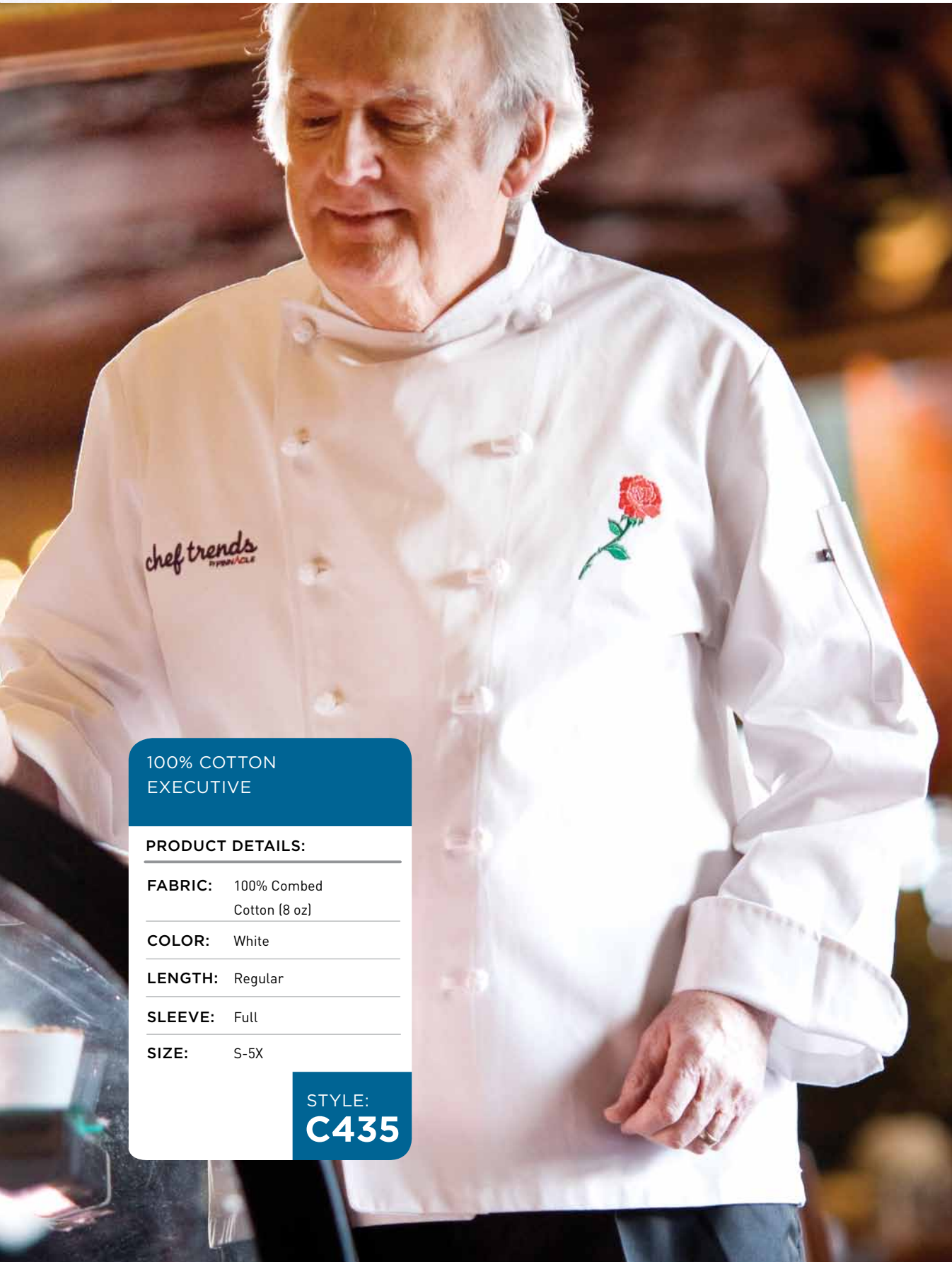




All coats listed have 1 thermometer pocket on left sleeve, but no chest pocket. French-cut, V-shaped front, rounded cuffs, 3-piece back, 12 cotton, hand-tied knot buttons. All coats listed are packed 24 each Per carton and individually polybagged.

*chef trends*  
BY PINNACLE

## CHEF COATS



100% COTTON  
EXECUTIVE

**PRODUCT DETAILS:**

**FABRIC:** 100% Combed  
Cotton (8 oz)

**COLOR:** White

**LENGTH:** Regular

**SLEEVE:** Full

**SIZE:** S-5X

STYLE:  
**C435**



Knot Button



Rounded Cuff



French Cut



Thermometer Pocket

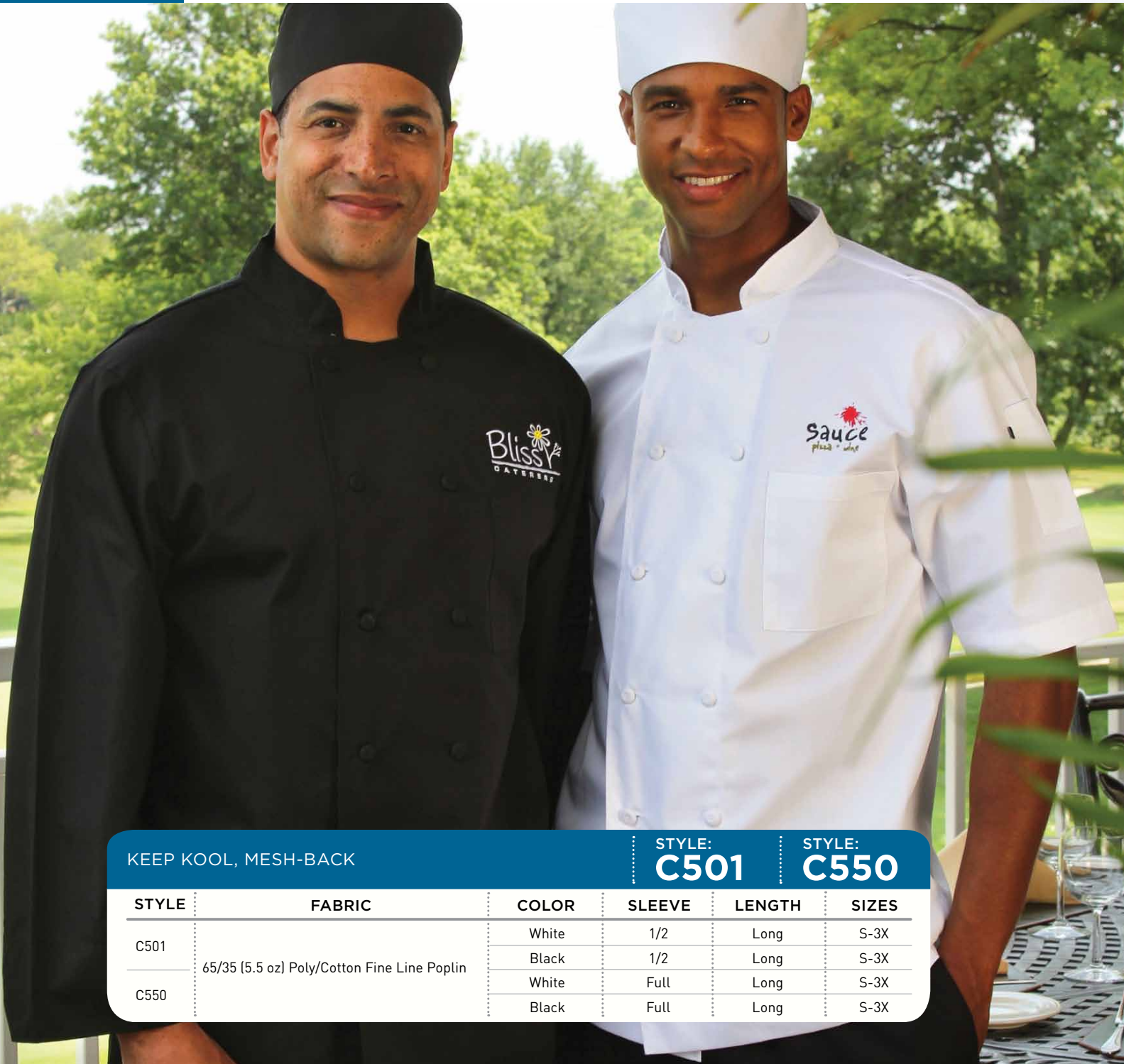
# CHEF COATS



All coats listed have 1 chest pocket and 1 thermometer pocket on left sleeve. Top half of back made with Keep Kool Mesh fabric. 10 matching cloth-covered buttons. Coats have extra 2" of body length over regular length coats. All coats listed are packed 24 each per carton and individually polybagged.

Matching Mesh Topped Skull caps X500

chef trends  
BY PINNACLE



| KEEP KOOL, MESH-BACK |   |       | STYLE:<br><b>C501</b> | STYLE:<br><b>C550</b> |       |
|----------------------|---|-------|-----------------------|-----------------------|-------|
| STYLE                | FABRIC                                      | COLOR | SLEEVE                | LENGTH                | SIZES |
| C501                 | 65/35 (5.5 oz) Poly/Cotton Fine Line Poplin | White | 1/2                   | Long                  | S-3X  |
|                      |   | Black | 1/2                   | Long                  | S-3X  |
| C550                 |   | White | Full                  | Long                  | S-3X  |
|                      |   | Black | Full                  | Long                  | S-3X  |



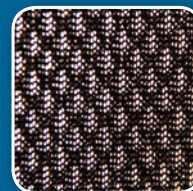
Cloth Button



Cloth Button



Thermometer Pocket



Keep Kool Mesh Back





All coats listed have 1 thermometer pocket on left sleeve, but no chest pocket. French-cut, V-shaped front, rounded cuffs, 3-piece back. White coats have 10 non-yellowing buttons, black coats have 10 black nylon buttons. All coats listed are packed 24 each per carton and individually polybagged.

## CHEF COATS

*chef trends*  
BY PINNACLE



LADIES BLENDED

STYLE:  
**C805**

| FABRIC                                   | COLOR | SLEEVE | LENGTH | SIZES |
|--|-------|--------|--------|-------|
| 65/35 (7 oz) Poly/Cotton Ring Spun Twill | White | Full   | Reg    | XS-3X |
|  | Black | Full   | Reg    | XS-3X |



Pearl Button



Nylon Button



Rounded Cuff



French Cut

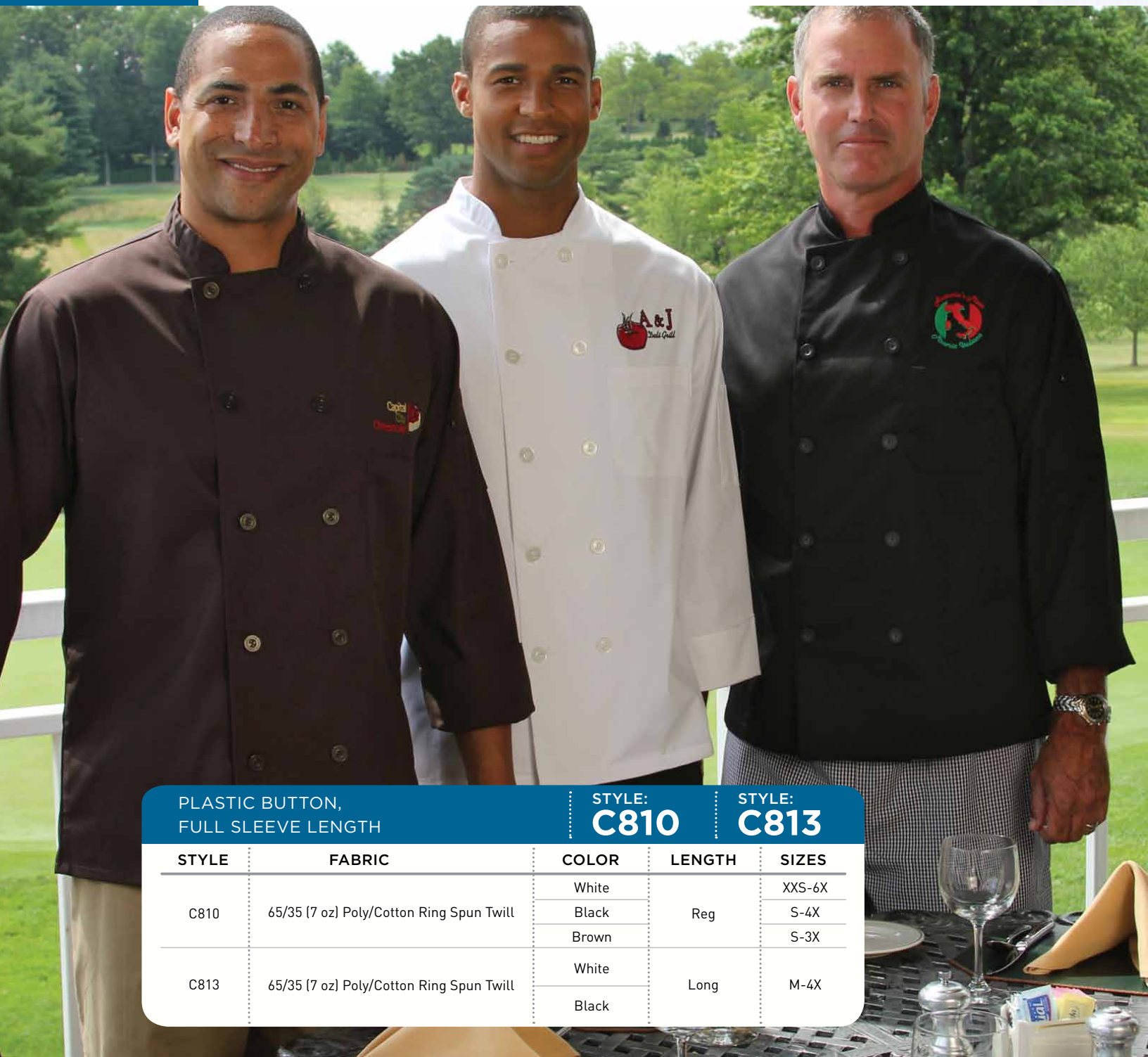


Thermometer Pocket

# CHEF COATS



All coats listed have 1 chest pocket and 1 thermometer pocket on left sleeve. Buttons are non-yellowing pearl buttons on White coats, Black and Brown coats have matching plastic buttons. White coats carton-packed 36 each carton, 6 each per polybag. Colored coats are packed 24 each per carton and individually polybagged.



| PLASTIC BUTTON,<br>FULL SLEEVE LENGTH |  | STYLE:<br><b>C810</b> | STYLE:<br><b>C813</b> |        |
|---------------------------------------|--|-----------------------|-----------------------|--------|
| STYLE                                 | FABRIC                                   | COLOR                 | LENGTH                | SIZES  |
| C810                                  | 65/35 (7 oz) Poly/Cotton Ring Spun Twill | White                 | Reg                   | XXS-6X |
|                                       |  | Black                 |                       | S-4X   |
|                                       |  | Brown                 |                       | S-3X   |
| C813                                  | 65/35 (7 oz) Poly/Cotton Ring Spun Twill | White                 | Long                  | M-4X   |
|                                       |  | Black                 |                       |        |



Plastic Button



Pearl Button



Plastic Button



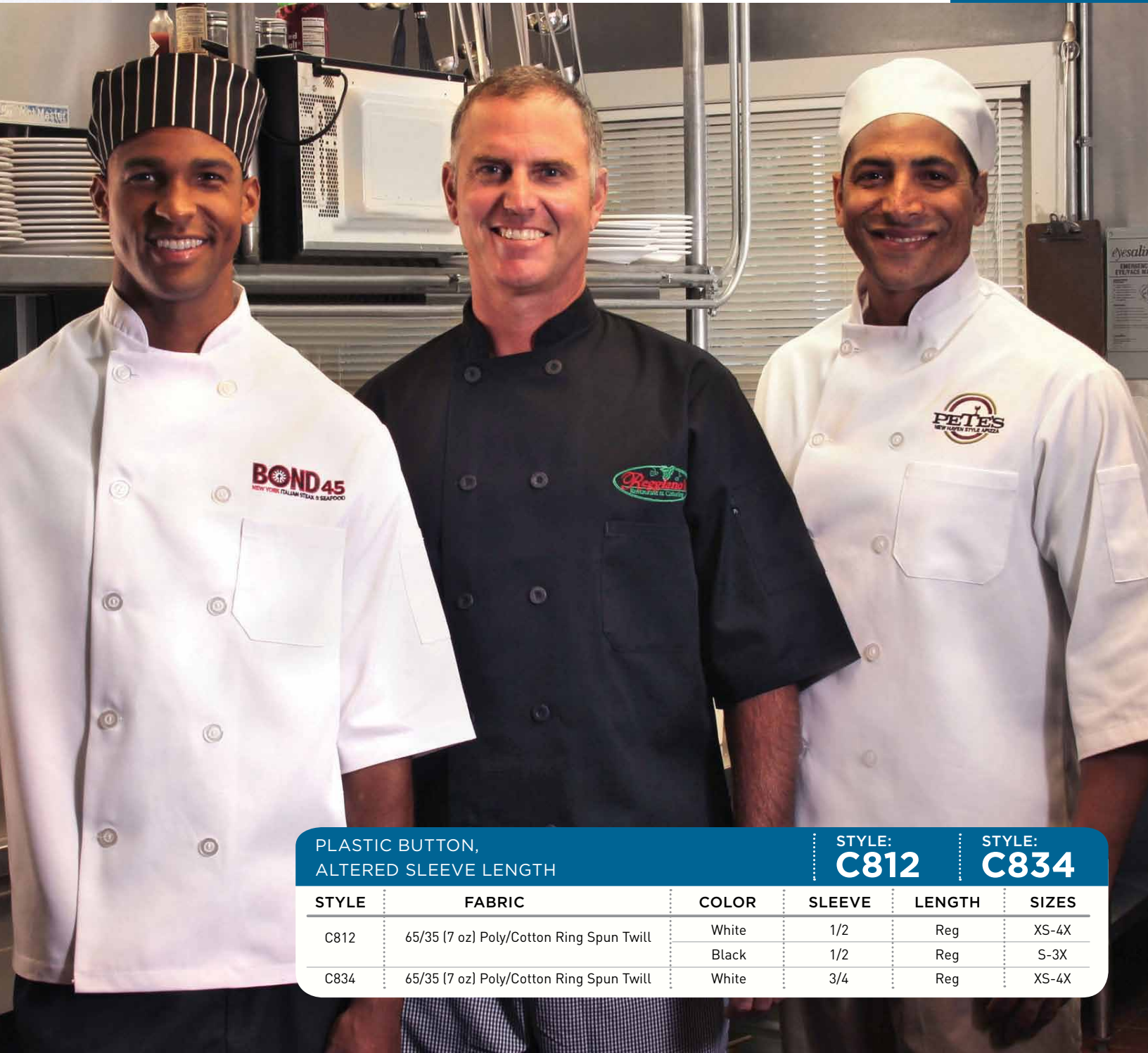
Thermometer Pocket



All coats listed have 1 chest pocket and 1 thermometer pocket on left sleeve. Buttons are non-yellowing pearl buttons on White Coats, Black Coats have matching black nylon molded buttons. All coats listed are packed 36 each per carton, 6 each per polybag.

## CHEF COATS

chef trends  
BY PINNACLE



PLASTIC BUTTON,  
ALTERED SLEEVE LENGTH

STYLE:  
**C812**

STYLE:  
**C834**

| STYLE | FABRIC                                   | COLOR | SLEEVE | LENGTH | SIZES |
|-------|--|-------|--------|--------|-------|
| C812  | 65/35 (7 oz) Poly/Cotton Ring Spun Twill | White | 1/2    | Reg    | XS-4X |
|       |  | Black | 1/2    | Reg    | S-3X  |
| C834  | 65/35 (7 oz) Poly/Cotton Ring Spun Twill | White | 3/4    | Reg    | XS-4X |



1/2 Sleeve



3/4 Sleeve



Pearl Button



Plastic Button



Thermometer Pocket

# CHEF COATS



All coats listed have 1 chest pocket and 1 thermometer pocket on left sleeve. Coats feature 10 matching color 100% polyester hand-tied cloth knot buttons, double bar-tacked internally to conceal the tails. White coats are packed 36 each per carton, 6 each per polybag. Colored coats are packed 24 each per carton, and individually polybagged.

*chef trends*  
BY PINNACLE



White Knot Button



Black Knot Button



Brown Knot Button



Thermometer Pocket



## BLENDED KNOT BUTTON

STYLE:  
**C830**

STYLE:  
**C833**

STYLE:  
**C837**

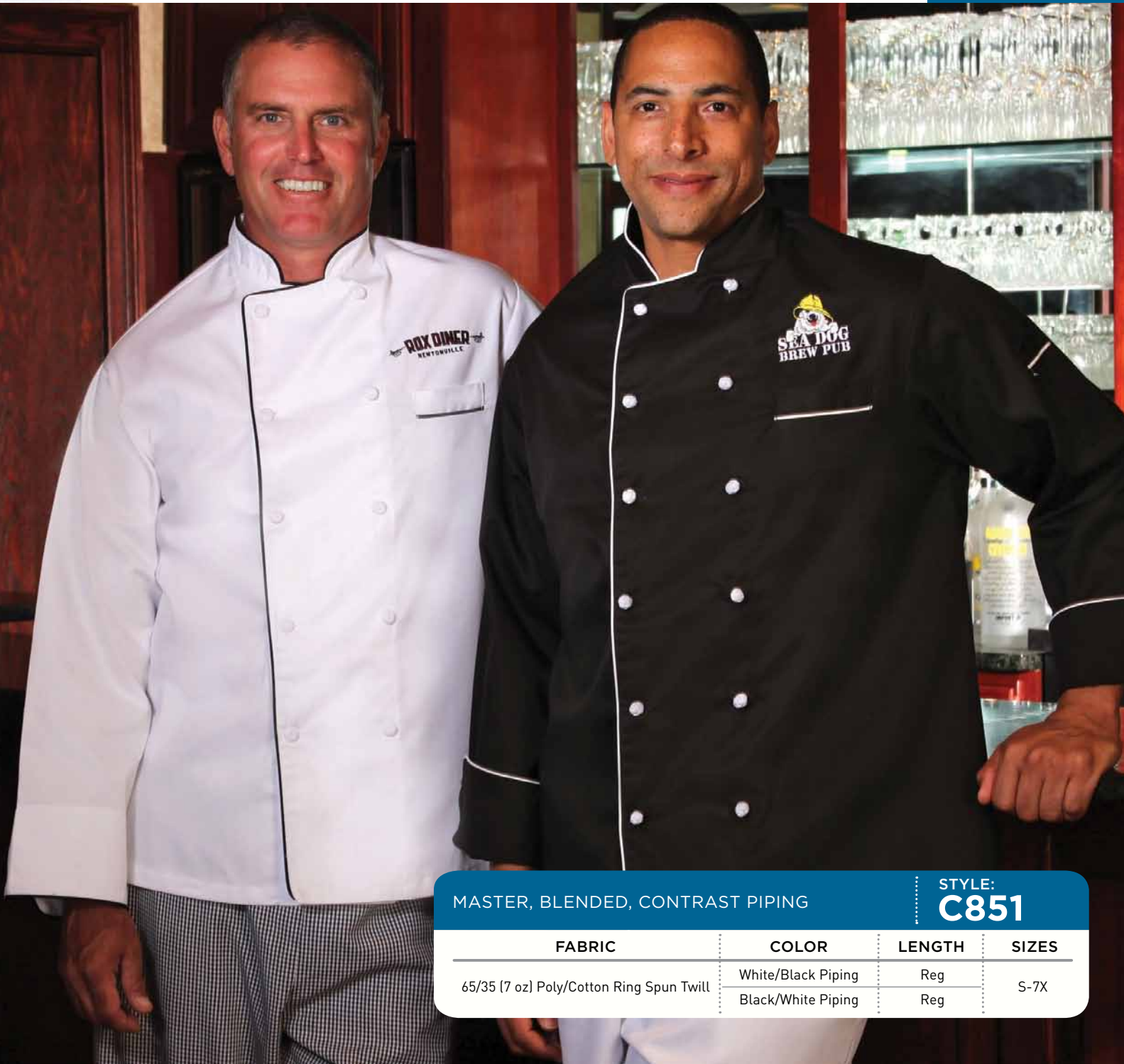
| STYLE | FABRIC                                   | COLOR | SLEEVE | LENGTH | SIZES |
|-------|--|-------|--------|--------|-------|
| C830  | 65/35 (7 oz) Poly/Cotton Ring Spun Twill | White | Full   | Reg    | XS-6X |
|       |  | Black |        |        | S-4X  |
|       |  | Brown |        |        | S-3X  |
| C833  | 65/35 (7 oz) Poly/Cotton Ring Spun Twill | White |        | Long   | M-4X  |
|       |  | Black |        |        |       |
| C837  | 65/35 (7 oz) Poly/Cotton Ring Spun Twill | White | 3/4    | Reg    | S-2X  |



The coat listed has 1 welt chest pocket and 1 thermometer pocket on left sleeve. Polyester piping around collar, facing, cuffs, and welt pockets. White Coats have 10 cloth covered buttons. Black Coats have 12 polyester hand tied knot buttons with concealed tails. The coat listed is packed 24 each per carton and individually polybagged.

## CHEF COATS

*chef trends*  
BY PINNACLE



MASTER, BLENDED, CONTRAST PIPING

STYLE:  
**C851**

| FABRIC                                   | COLOR              | LENGTH | SIZES |
|--|--------------------|--------|-------|
| 65/35 (7 oz) Poly/Cotton Ring Spun Twill | White/Black Piping | Reg    | S-7X  |
|  | Black/White Piping | Reg    |       |



Knot Button



Cloth Button



Black Polyester Piping



White Polyester Piping



Welt Pocket



Thermometer Pocket

**COOK SHIRTS**



All shirts listed have 1 chest pocket, 6 gripper snaps and 2" extra-long body. All shirts listed are packed 72 each per carton, 12 each per polybag.

Available in 65/35 (Chef Trends) and 100% Poly (Pinnacle HD).



| POPLIN WITH CHEST POCKET |   | STYLE:<br><b>S102</b> | STYLE:<br><b>S302</b> |       |
|--------------------------|---|-----------------------|-----------------------|-------|
| STYLE                    | FABRIC                                      | COLOR                 | LENGTH                | SIZES |
| S102                     | 65/35 (4.5 oz) Poly/Cotton Ring Spun Poplin | White                 | Long                  | S-5X  |
|                          |   | Black                 |                       | XS-4X |
| S302                     | 100% MJS (4 oz) Spun Polyester              | White                 | Long                  | S-5X  |
|                          |   | Black                 |                       | XS-6X |



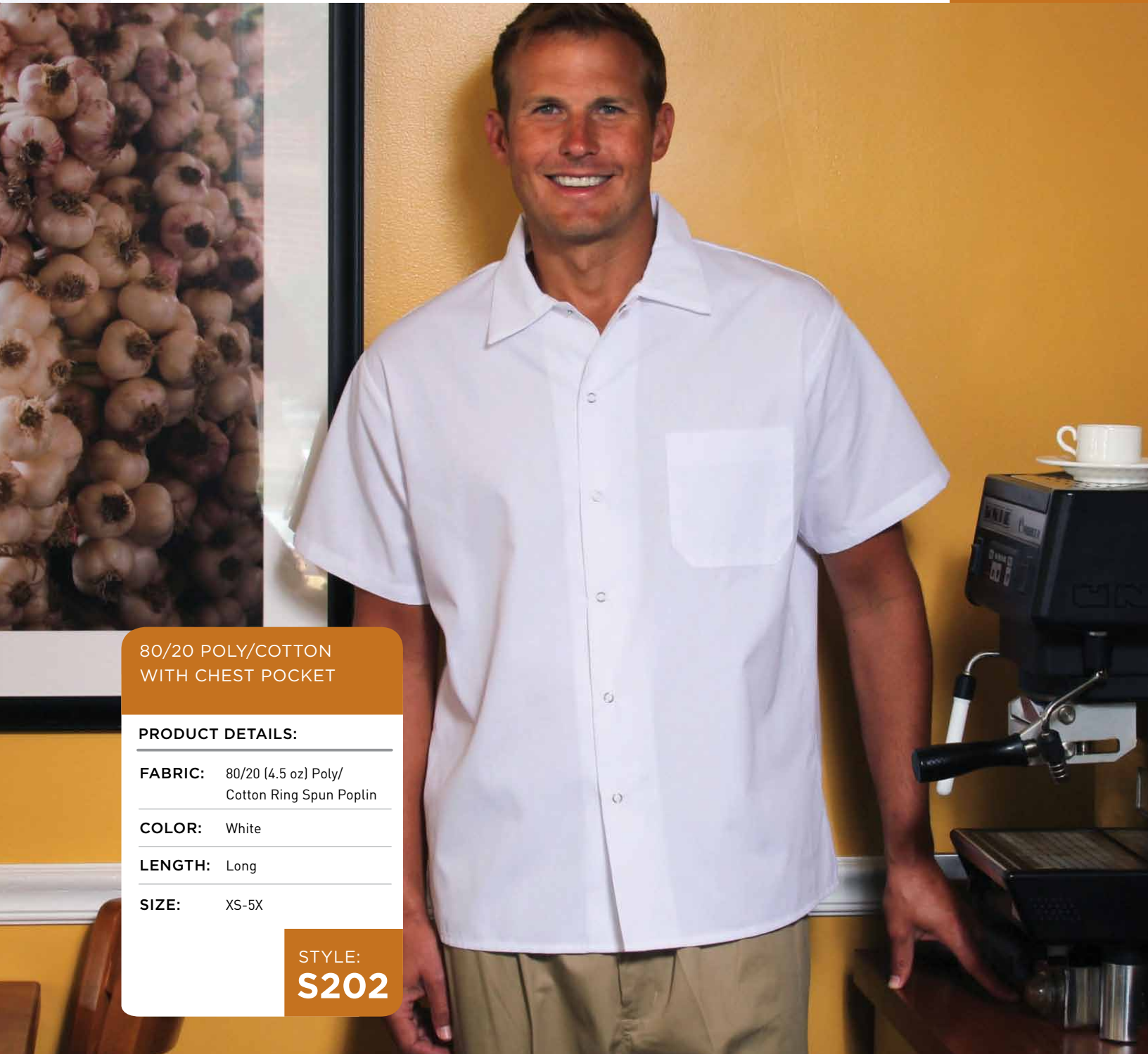




All shirts listed have 1 chest pocket, 6 gripper snaps and 2" extra-long body. All shirts listed are packed 72 each per carton, 12 each per polybag.

## COOK SHIRTS

**kitchen basix**  
BY PINNACLE



80/20 POLY/COTTON  
WITH CHEST POCKET

**PRODUCT DETAILS:**

**FABRIC:** 80/20 (4.5 oz) Poly/  
Cotton Ring Spun Poplin

**COLOR:** White

**LENGTH:** Long

**SIZE:** XS-5X

STYLE:  
**S202**



Stainless Steel Rust Proof Snaps



All shirts listed have no chest pocket, 6 gripper snaps and a 2" extra-long body. All shirts listed are packed 72 each per carton, 12 each per polybag.

PINNACLE<sup>HD</sup>



SPUN POLY WITH  
NO CHEST POCKET

**PRODUCT DETAILS:**

**FABRIC:** 100% MJS (4 oz)  
Spun Polyester

**COLOR:** White

**LENGTH:** Long

**SIZE:** XS-5X

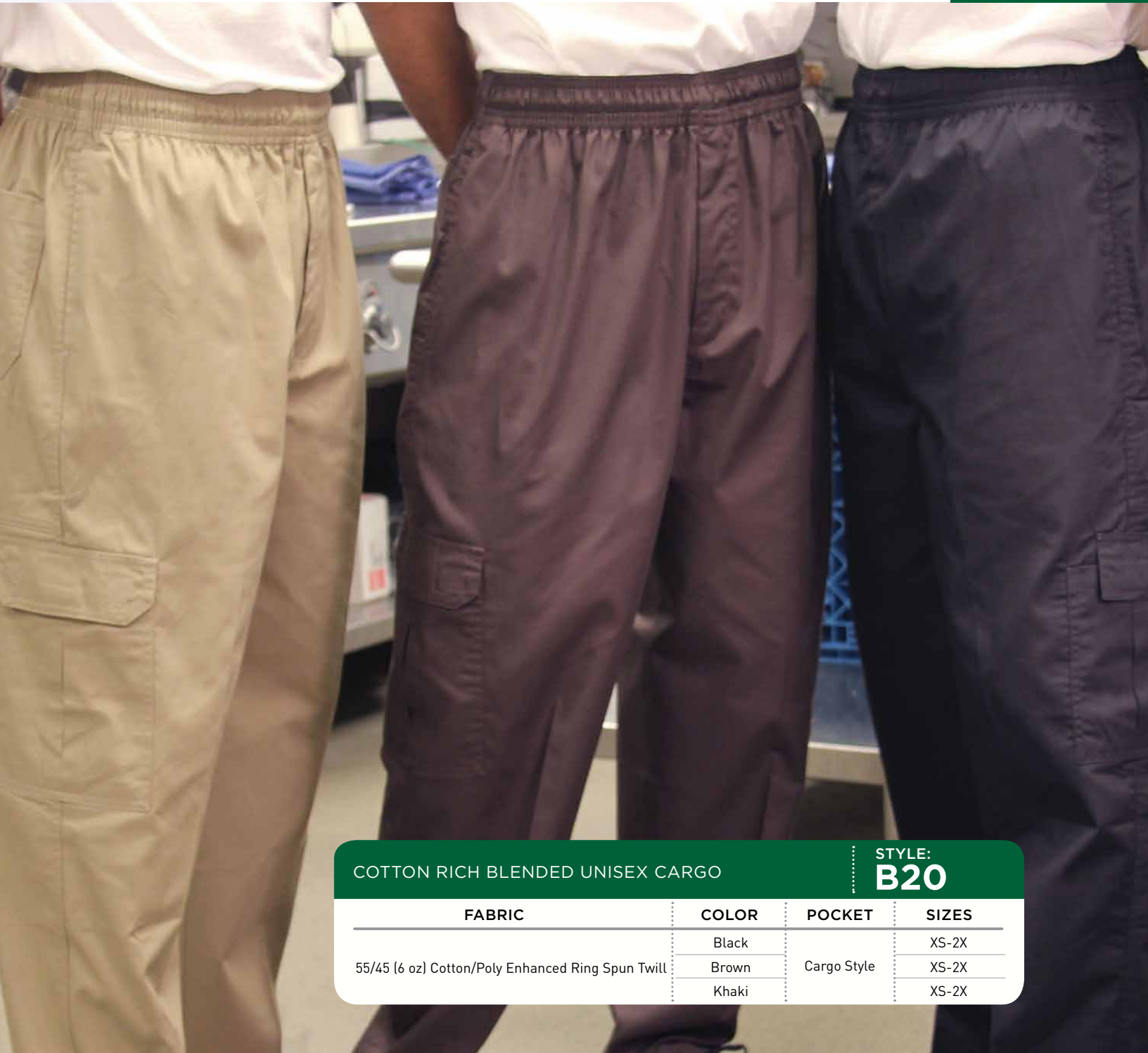
STYLE:  
**S315**



All pants listed have 2" full-waist elastic draw cord, 2 hip pockets, 2 back pockets, large cargo pocket on right pant leg, cell phone pocket on left leg. Unisex style. All pants listed are packed 24 each per carton and individually polybagged.

## BAGGY CHEF PANTS

*chef trends*  
BY PINNACLE



COTTON RICH BLENDED UNISEX CARGO

STYLE:  
**B20**

| FABRIC  | COLOR | POCKET      | SIZES |
|---|-------|-------------|-------|
| 55/45 (6 oz) Cotton/Poly Enhanced Ring Spun Twill | Black | Cargo Style | XS-2X |
|   | Brown |             | XS-2X |
|   | Khaki |             | XS-2X |



Cell Phone Pocket



Cargo Pocket



Inside Drawcord  
Elastic Waist

# BAGGY CHEF PANTS



All pants listed have 2" full-waist elastic draw cord, 2 hip pockets, 1 back pocket. Unisex style. Carton Packed 24 each per carton, 6 each per polybag.

chef trends  
BY PINNACLE



POLY/COTTON UNISEX BAGGY

STYLE:  
**B15**

| FABRIC                            | COLOR         | POCKET | SIZES |
|-----------------------------------|---------------|--------|-------|
| 65/35 (7 oz) Poly/Cotton OE Twill | Black         | 2 Hip  | XS-6X |
|                                   | B/W Check     | 1 Back | XS-8X |
|                                   | B/W Pinstripe |        | XS-6X |



Hip Pocket



Back Pocket



Inside Drawcord Elastic Waist



All pants listed have 2" full-waist elastic draw cord, 2 hip pockets, 1 back pocket. Unisex style. Carton packed 24 each per carton, 6 each per polybag.

Available in zipper and non-zipper versions. B37 non-zipper unavailable in White.

## BAGGY CHEF PANTS

PINNACLE<sup>HD</sup>



### POLYESTER UNISEX BAGGY

STYLE:  
**B35**

STYLE:  
**B37**

| STYLE | FABRIC                                     | COLOR     | POCKET          | SIZES |
|-------|--|-----------|-----------------|-------|
| B35   | 100% MJS (7.2 oz) Spun Polyester no zipper | White     | 2 Hip<br>1 Back | S-3X  |
|       |  | Black     |                 | XS-7X |
|       |  | B/W Check |                 | XS-7X |
| B37   | 100% MJS (7.2 oz) Spun Polyester w/zipper  | Black     | 2 Hip<br>1 Back | XS-3X |
|       |  | B/W Check |                 | XS-3X |



Hip Pocket



Back Pocket



Inside Drawcord Elastic Waist



Zipper Fly

# COOK PANTS



All pants listed have YKK brass zippers, nickel-plated Mighty Snap waist closure, 2 hip pockets, 2 back patch pockets, 2 size labels on outside for easy sorting. Carton packed 36 each per carton, 6 each per polybag.



POLY/COTTON COOK/CHEF PANT

STYLE:  
**P100**

| FABRIC                            | COLOR     | WAIST | INSEAM |
|-----------------------------------|-----------|-------|--------|
| 65/35 (7 oz) Poly/Cotton OE Twill | White     | 28-56 | 36" UF |
|                                   | Black     | 28-60 | 36" UF |
|                                   | B/W Check | 28-60 | 36" UF |



Zipper Fly



Snap Closure



Hip Pocket



Patch Pocket



All pants listed have YKK brass zippers, nickel-plated Mighty Snap waist closure, 2 hip pockets, 2 back patch pockets, 2 size labels on outside for easy sorting. Carton packed 36 each per carton, 6 each per polybag. Available with or without flex waist.

PINNACLE<sup>HD</sup>

COOK PANTS



Flex Waist



Zipper Fly



Snap Closure

POLYESTER CHECK CHEF PANT

STYLE:  
**P300**

STYLE:  
**P302**

| STYLE | FABRIC  | COLOR     | WAIST               | INSEAM |
|-------|---|-----------|---------------------|--------|
| P300  | 100% MJS (5 oz) Spun Polyester                  | B/W Check | 28-56               | 36" UF |
| P302  | 100% MJS (5 oz) Spun Polyester<br>2" Flex Waist | B/W Check | 28-30 thru<br>52-54 | 36" UF |

# CHEF HATS



All hats listed below are made from 65/35 (5 oz) Poly/Cotton Poplin and have a Velcro closure for ONE SIZE FITS ALL. Carton packed 144 per case, 12 each per polybag.

chef trends  
BY PINNACLE



CHEF HATS    STYLE: **X100**

**COLORS**

- \_\_\_\_\_ White
- \_\_\_\_\_ Black
- \_\_\_\_\_ B/W Check
- \_\_\_\_\_ White with Black Trim
- \_\_\_\_\_ White with B/W Trim



White



B/W Check



White with Black Trim



White with B/W Check Trim



Black





All kerchiefs listed are made from 65/35 (5 oz) Poly/Cotton Poplin and are hemmed on all 3 sides. Carton Packed 300 per case, 12 each per polybag.

chef trends  
BY PINNACLE

## KERCHIEFS



Black



White



B/W Check

KERCHIEFS    STYLE:  
**X150**

**COLORS**

White

Black

B/W Check

# SKULL CAPS



Skull caps listed are made from Poly/Cotton blends to match uniform fabrics. Skull caps made with adjustable elastic for ONE SIZE FITS ALL. Carton packed 144 per case, 12 each per polybag.

*chef trends*  
BY PINNACLE



B/W CHECK



BLACK



KHAKI



CHALKSTRIPE



RED



WHITE



PINSTRIFE



BROWN

REGULAR

STYLE:  
**X475**

**COLORS**

- \_\_\_\_\_ B/W Check
- \_\_\_\_\_ Black
- \_\_\_\_\_ Brown
- \_\_\_\_\_ Khaki
- \_\_\_\_\_ White
- \_\_\_\_\_ Chalkstripe
- \_\_\_\_\_ Pinstripe
- \_\_\_\_\_ Red



Elastic Band



Skull caps listed below are made from 65/35 Poly/Cotton Fine Line 5.5 oz Poplin and have Keep Kool mesh fabric sewn on top, allowing head to breathe. Keep Kool skull caps are made with adjustable elastic and sized either Small/Medium or Large/XLarge. Carton packed 144 per case, 12 each per polybag.

## SKULL CAPS

*chef trends*  
BY PINNACLE



| KEEP KOOL | STYLE:<br><b>X500</b> |
|-----------|-----------------------|
|           |                       |
| COLOR     | SIZE                  |
| Black     | S/M or L/XL           |
| White     | S/M or L/XL           |



Elastic Band



Mesh Top



Mesh Top

# BUTCHER FROCKS



All frocks listed are 41" base length (Size L) and have 6 rust-proof steel gripper snaps. Carton packed 24 each per carton, 3 each per polybag.

Butcher Frocks can be special ordered in colors and with different pocket configurations, knit cuffs and colored trim. See our "Build Your Own Frock" page for details.

**PINNACLE**HD



Stainless Steel  
Rust Proof Snaps



Inside Pocket



Regular Cuffs



| POLYESTER |                                  | STYLE:<br><b>F380</b> | STYLE:<br><b>F385</b>            |       |
|-----------|----------------------------------|-----------------------|----------------------------------|-------|
| STYLE     | FABRIC                           | COLOR                 | POCKETS                          | SIZES |
| F380      | 100% MJS (7.2 oz) Spun Polyester | White                 | 3 outside                        | S-5X  |
| F385      |                                  |                       | 1 inside top,<br>2 outside lower | S-5X  |